



Verw. : Wagareas
Dept. : Grondslagfase Kommunikasie
Kontak : Mev. C. de Beer
Datum : 17 Januarie 2019



GRONDSLAGFASE: WAGAREAS NA SKOOLURE

Geagte Ouers

Ons wil graag die aangewyste wagareas na skool vir Graad 1 tot 3 onder u aandag bring. Sien asseblief ook die aangehegte foto's.

Die Graad 1, 2 en 3 leerders wat vir u vir 'n geruime tyd, of vir hulle ouer broers en susters na skool moet wag, moet na die wagarea by die sekuriteitswag aan die oorkant van die veld verdaag. Leerders kan by die ingerigte wagarea onder die dakkies wag, of aan die binnekant van die veld reg langs die telbord. Dit is baie veilig daar en daar is ook kameras geïnstalleer.

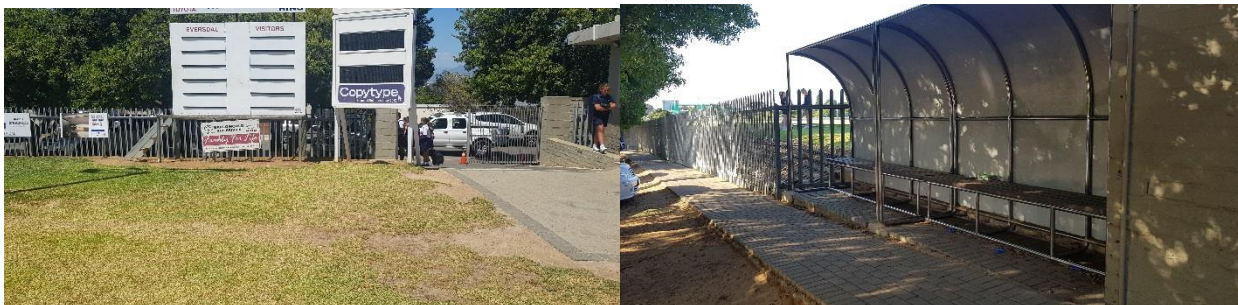
Ons vra dat geen leerders by die Graad 1-parkie of aan die voorkant van die skool sal rondhang nie. Indien ons leerders wel daar vind, sal hulle na die wagareas geneem word aangesien hulle steurend is vir die Gr 4 tot 7's wat nog skoolgaan. Dit is ook natuurlik 'n veiligheidsrisiko. Dra asseblief hierdie reëlins ook aan u kinders oor.

U samewerking in hierdie verband sal baie waardeer word.

Vriendelike groete

MEV. C DE BEER
DEPARTEMENTSHOOF

MNR. H. ARANGIES
LAERSKOOL EVERSDAL: SKOOLHOOF





Ref: Waiting Areas
Dept.: Foundation Phase Communication
Contact: Mrs C de Beer
Date: 17 January 2019



WAITING AREAS AFTER SCHOOL HOURS FOR THE FOUNDATION PHASE

Dear Parents

We wish to bring to your attention that there are allocated waiting areas for the Grade 1 to 3 learners after school. (Photographs attached.)

The Grade 1, 2 and 3 learners that either wait for you for quite a while or for their older brothers and sisters after school, must go to the allocated waiting area with the security guard on the opposite side of the fields. Learners may wait at the “dug-out” or on the inside of the gate at the scoreboard. It is very safe there and there are also cameras installed to monitor the area.

We ask that no learners will play in the grade 1 park or at the front of the school. If we do find learners there, they will be accompanied to the waiting areas as they are hindering the Grade 4 tot 7’s that are still in the classes. It is also a security risk. Please adhere to this arrangement.

Your co-operation will be greatly appreciated.

Regards

MRS C DE BEER
DEPARTMENTAL HEAD

MR H. ARANGIES
EVERDAL PRIMARY SCHOOL: HEADMASTER

